

# USER MANUAL



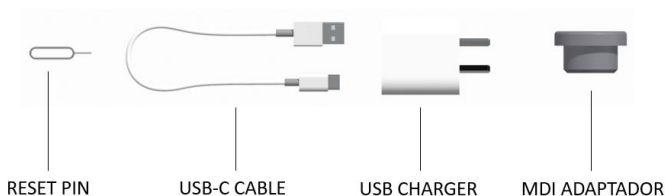
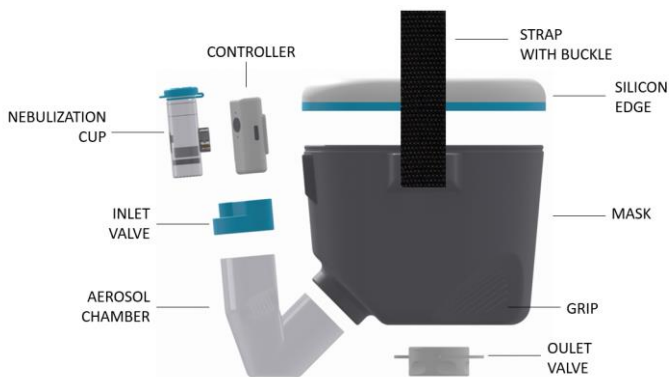
## Portable Equine Nebulizer



# RECOMMENDED USE

This device allows for the generation of an aerosol cloud to be inhaled by the horse. The liquid/medication to be nebulized must be prescribed by a veterinarian, who should also provide instructions regarding the volume, proportion, and nebulization time for each session.

# COMPONENTS



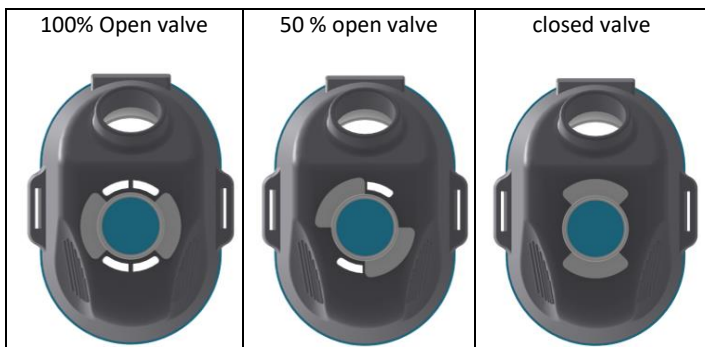
SECURITY STRAP

## SAFETY INFORMATION

While the mask is made from flexible materials, the controller and the aerosol chamber are constructed from more rigid materials. If the horse makes any sudden movements, it could hit and injure the user.

It is highly recommended to exercise extreme caution when using this product, especially if it is the first time the horse is using a nebulizer of this type.

The mask should be placed gently without the nebulizer unit attached, and with the exhaust valve fully open to allow the horse to breathe normally.

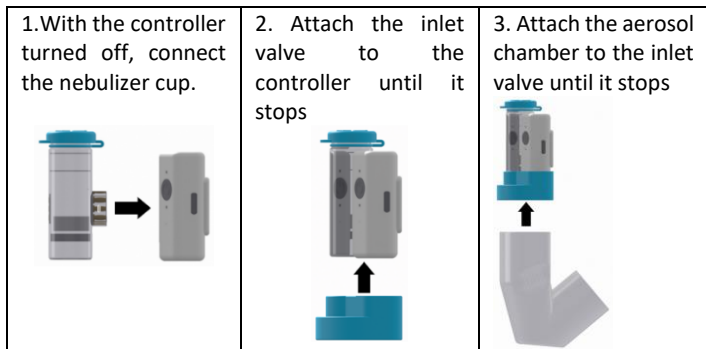


Ensure that the mask completely covers the horse's mouth and nose, and that the edge fits snugly around the entire circumference of the muzzle. Make sure that the exhaust valve is correctly attached to the mask, and that neither it nor the inlet valve is blocked or damaged and that they move freely.

Ensure that the self-adjusting edge is not damaged.

## PLACEMENT AND USE INSTRUCTION

Add the liquid to be nebulized into the nebulization cup according to the veterinarian's instructions and assemble the nebulizer set as follows:



Place the mask on the horse, following the safety instructions, and adjust the strap so that the mask is firmly positioned.



Attach the nebulizer assembly to the mask. It is recommended to first insert the aerosol chamber into the mask, keeping the nebulizer assembly at an angle between 30 and 45 degrees and holding the mask with the other hand by the grip. Once inserted, rotate the nebulizer assembly until the controller aligns with the magnetic base. You will notice that the nebulizer assembly aligns and attaches to the mask almost automatically.

You can use the safety strap to prevent the nebulizer assembly from detaching in case the animal makes sudden movements.



Turn the nebulizer on and adjust the outlet valve to the appropriate ventilation level. You will notice the liquid transformed into aerosol filling the aerosol chamber, and when the horse inhales, you will see it empty.

**Never connect or disconnect the nebulizer cup with the controller turned on. This could damage the equipment.**

When the nebulization is complete, first detach the nebulizer assembly by rotating it clockwise or counterclockwise to easily release the magnetic coupling, and then detach the aerosol chamber from the mask.

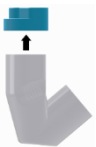




## USING MDI

You can use medications via MDI (Metered Dose Inhaler) or Puff, according to the veterinarian's instructions, using the adapter accessory for this purpose.



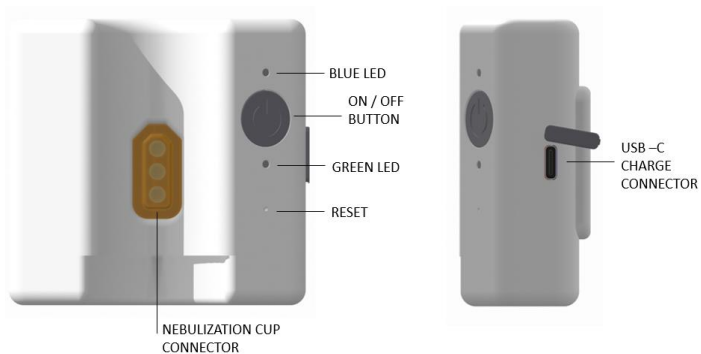
Assemble the set to apply the MDI as indicated below:

<p>1. Attach the aerosol chamber to the inlet valve until it stops.</p> 	<p>2. Attach the MDI adapter to the inlet valve.</p> 	<p>3. Attach the inhaler to the MDI adapter.</p> 
---	--	--

Attach the assembled set with the MDI to the mask by inserting the aerosol chamber and rotating it at an angle of approximately 30 to 45 degrees while holding the mask with the other hand by the grip. Apply the dose according to the veterinarian's instructions.



# CONTROLLER



## TURNING ON AND OFF

Press and release the power button to turn on the device. The green LED located at the bottom of the button will light up and stay on until the button is pressed again to turn it off manually. The nebulizer will start operating and will automatically turn off after 30 minutes. It can also be turned off at any time by pressing and releasing the power button.

## LIQUID DETECTION

When all the liquid in the nebulizer cup has been consumed or if the device is turned on without any liquid in the cup, the device will detect the absence of liquid and the blue LED above the power button will blink every second, four times, and the device will automatically turn off.

## DISCONNECTED CUP DETECTION

If the device is turned on without the nebulizer cup attached, if it is poorly attached to the controller, or if it is damaged, the blue LED will blink rapidly four times per second for four seconds and the device will automatically turn off.

## TURBO MODE

During nebulization with the device on, if you press and hold the power button for two seconds, turbo mode will activate and significantly increase the nebulization flow. The blue LED will blink twice every four seconds when turbo mode is activated.

The auto shut-off timer will change from 30 minutes to 15 minutes. Note that in this mode, battery consumption is higher. To exit turbo mode, press and hold the button for two seconds.

Turbo mode will also deactivate automatically when the device is turned off. Turbo mode cannot be activated if the green LED indicates low battery.

## LOW BATTERY

When the battery is low and the device is on, the green LED will blink every second, and there will be enough charge for one nebulization session, depending on the battery's lifespan. When the battery level is very low, the green LED will blink four times per second for four seconds and the device will turn off. The device will not operate until the battery is charged.



## BATTERY CHARGING

Use the charger provided with the device and connect the cable to the USB-C connector located under the cap on the right side of the controller. With the device turned off and the charger connected, the green LED will increase and decrease in intensity in a six-second cycle. This indicates that the device is charging. When the battery is fully charged, the green LED will turn off.

If you turn on the device while it is charging, the green LED's intensity cycle will be three seconds. When disconnecting the USB-C cable, remember to cover the connector. If a drop of liquid enters the connector, it could damage the device and void the warranty.

## RESET

The hole below the green LED is the reset button. To press it, use the reset pin included with the device. Do not use any other tool, as it could damage the internal moisture seal and void the warranty.

When the reset button is pressed, the blue LED will quickly turn on and off.

### **Situations where you might need to press the reset button:**

- If you notice unusual behavior.
- If the device has sufficient charge and does not respond when the power button is pressed.
- If the device remains on and the power button does not respond.
- If it has no charge and when plugging in the charger, the green LED does not perform the charging cycle.

# TECHNICAL SPECIFICATIONS

**NEBULIZATION FLOW:** Approximately between 0.5ml/min and 0.8ml/min, calculated using a saline solution and a NORMAL nebulizer cup. The flow rate may vary depending on the type of liquid being nebulized and the mode of use, whether normal mode or turbo mode.

**PARTICLE SIZE:** Less than 5 $\mu$ m.

**NEBULIZER CUP VOLUME:** The cup can hold up to 15ml of liquid for nebulization.

**NEBULIZER CUP LIFESPAN:** Approximately 50 hours (100 sessions). Value calculated using saline solution. May vary depending on the type of liquid being nebulized and care and maintenance.

**BATTERY LIFE:** Approximately 4 hours when fully charged, depending on usage mode.

**BATTERY CHARGER:** Switching type charger input 100-240Volts AC / 50-60Hz output 5v USB. Cable with USB-C connector. Use only simpleneb charger and cable. The use of an alternative charger and/or cable could cause fire or explosion and void the warranty.

## **MASK EDGE OPENING:**

SMALL MASK: 12.2 to 16.5 in.

MEDIUM MASK: 16.5 to 22.8 in.

LARGE MASK: 21 to 26 in.

OPTIONAL MEDIUM TO SMALL MASK ADAPTER: 13.8 to 21.2 in.

OPTIONAL LARGE TO MEDIUM MASK ADAPTER: 16.5 to 22.8 in.

**NOISE:** Less than 47dB.

**WEIGHT:** The complete unit without the box or charger weighs approximately 2.2 pounds.

**ENVIRONMENTAL CONDITIONS:** Operation: 77°F to 112°F and up to 85% humidity. Storage and transport: -4°F to 112°F and 15% to 85% humidity.

## CLEANING AND MAINTENANCE

Do not use solvents, alcohol, or acetone for cleaning the equipment. The controller can be wiped with a damp cloth in water. Never submerge it in water, as this would damage the equipment and void the warranty. The nebulization cup should be kept clean and dry between each session. After finishing nebulization, disconnect the cup from the controller, place the cover on the cup connector, and proceed to clean it using distilled water. You can add a few drops of detergent for better cleaning, but always rinse thoroughly with plenty of distilled water. Let it dry on a paper towel.

The mask, self-adjusting silicon edge, aerosol chamber, and inlet and outlet valves can be cleaned under running water with plenty of water. It is advisable to use a multi-surface disinfectant product.

Do not use sharp objects to clean the nebulizer.

## PROBLEMS AND SOLUTIONS

**The nebulizer is turned on but does not generate an aerosol cloud.**

Check that the nebulizer cup is properly connected to the nebulizer.

Ensure that there is enough liquid in the nebulizer cup.

Certain medications are quite thick to nebulize. If they are not adequately diluted with saline solution, it is likely that they will not generate an aerosol. Consult your veterinarian for the recommended proportion to dilute the medication.

If the dilution is correct, check that the nebulizer is functioning by placing only saline solution or distilled water in the cup and turning on the nebulizer.

You may need to use the RAPID cup for denser solutions. This cup is sold separately as an accessory.

If there is a prolonged time between introducing the liquid into the cup and turning on the nebulizer, small drops of liquid may accumulate at the bottom of the nebulizer cup, causing the aerosol not to generate. With the nebulizer on, use a cotton swab or paper towel to absorb the drops of liquid at the bottom of the cup, and the aerosol will start to flow.

**The nebulizer only works with the charger cable plugged in.**

The battery may not be charging because it is depleted or disconnected, or due to an internal circuit problem.

As a first step, reset the device. If the problem persists, you may need to replace the battery or the controller.

**The cup has enough liquid to nebulize, but the controller detects a lack of liquid and shuts off.**

Check that the cup is correctly connected to the controller.

Ensure that the connector on the cup side and the controller side is not moist. If so, dry it with a paper towel or hairdryer.

If the problem persists, replace the nebulizer cup.

## WARRANTY

Six-month warranty for manufacturing defects from the date of purchase. The nebulizer cup, being a piece that wears out with use, has no warranty.

**[www.simpleneb.com](http://www.simpleneb.com)**

email: [info@simpleneb.com](mailto:info@simpleneb.com)

Social networks:

